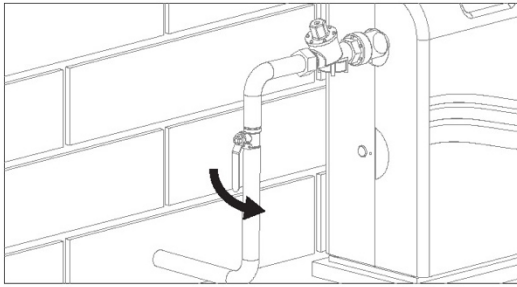
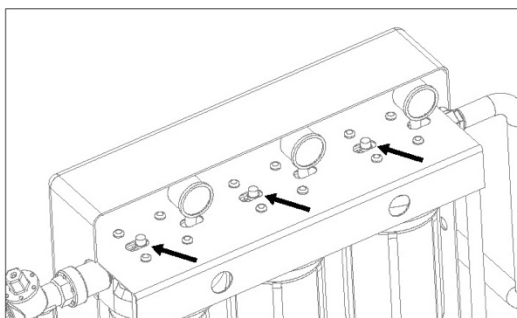


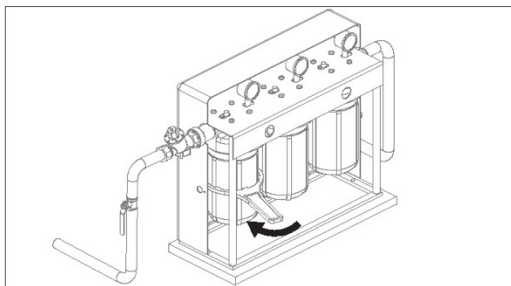
Filter Cartridge Replacement:



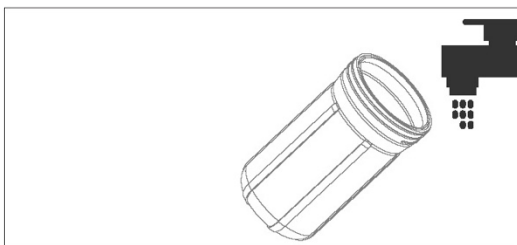
1. Turn off the water supply by turning off the valve. Drain the pipes by turning a tap on inside the home that is fed water via the filtration system to reduce the systems' water pressure.



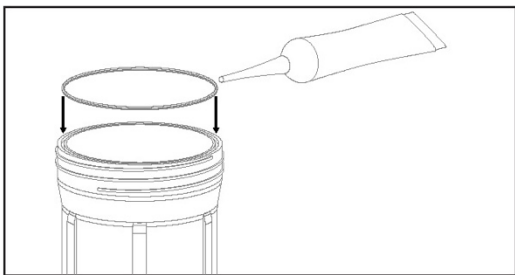
2. Remove the cover and press the red pressure-relief button.



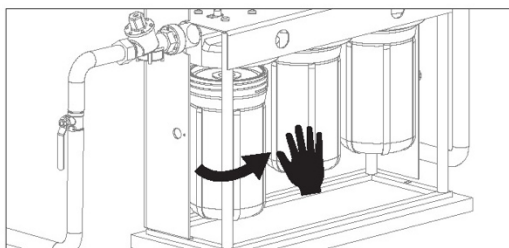
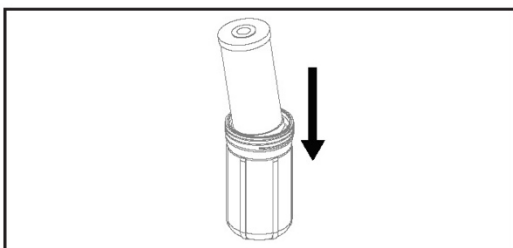
3. Using the wrench provided with the unit, unscrew the filter housing, then remove the large O-ring, wipe clean, and set aside.



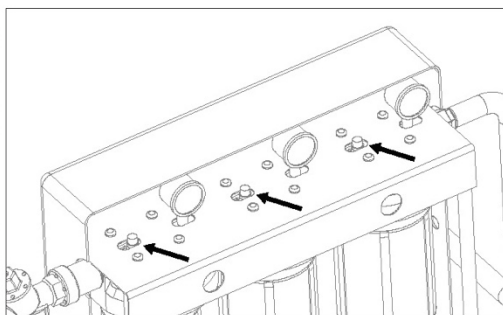
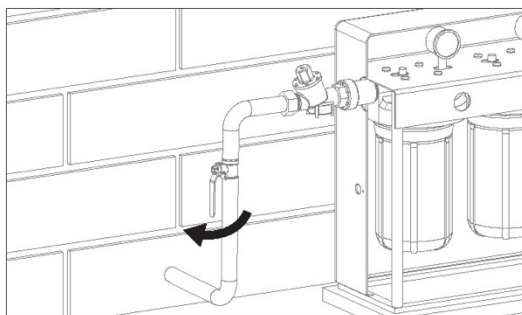
4. Discard the used filter cartridge. Wash the filter housing with dish soap and warm water using a non-abrasive sponge or cloth. Rinse thoroughly. Fill 1/3 with water, add one tablespoon of bleach and scrub to disinfect. Rinse thoroughly and dry.



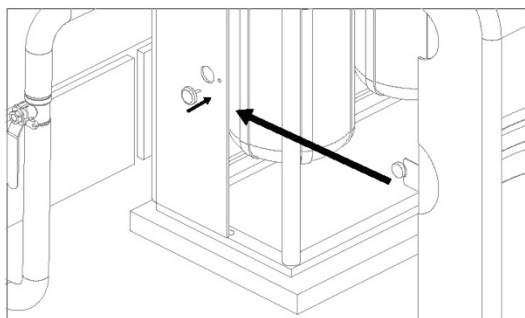
5. Lubricate the O-ring with clean silicone grease. Do not use petroleum jelly. Insert O-ring into the groove. This step is important to ensure a proper filter housing seal. Make certain the O-ring is seated level in the groove.



6. Insert the new filter cartridge. Screw the filter housing onto the cap and hand-tighten. Do not over-tighten. Over tightening will result in the system cracking and the warranty being void.



7. Turn on the water supply. Press the pressure-relief button. Check for leaks.



8. Assemble the cover and lock via the threaded lock screws.