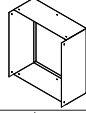

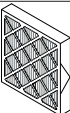
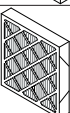



INSTALLATION:

Packing List:

No.	Description	Unit	Qty. 1200/1800 System	Image
1	Air Filter Frame	EA	2/3	
2	Grille Frame	EA	1	
3	Odour Filter	EA	2/3	
4	Particle Filter	EA	2/3	
5	Grille Fascia	EA	1	

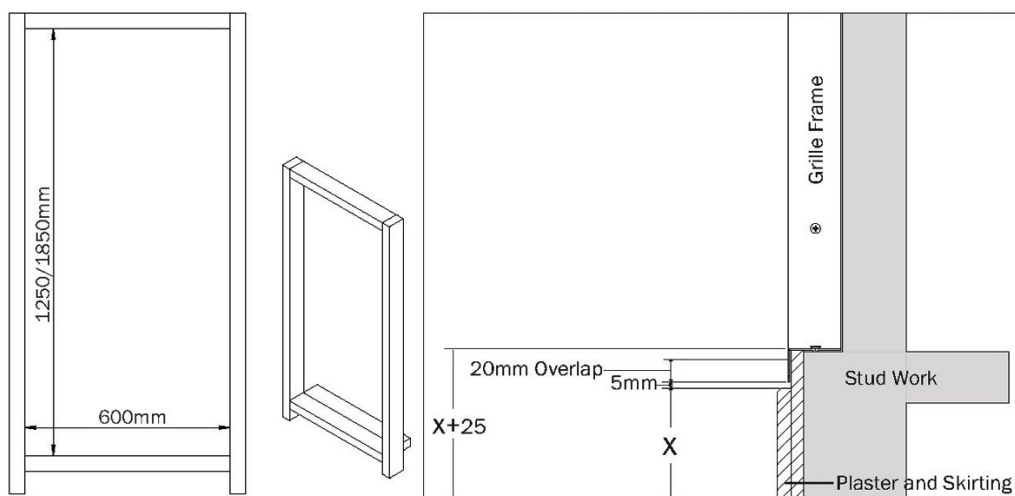
Assembly:

A) ROUGH IN STAGE (PRIOR TO PLASTER WORK):

1. Prepare the stud work based on the indicated dimensions.

Note: Consideration to be paid to the skirting height and the 20mm plaster overlap of the grille frame.

E.g. An 'X' height skirt will require 'X+25mm' to the top of the base plate. That allows for 5mm in between the skirting board and the bottom of the Grille frame.



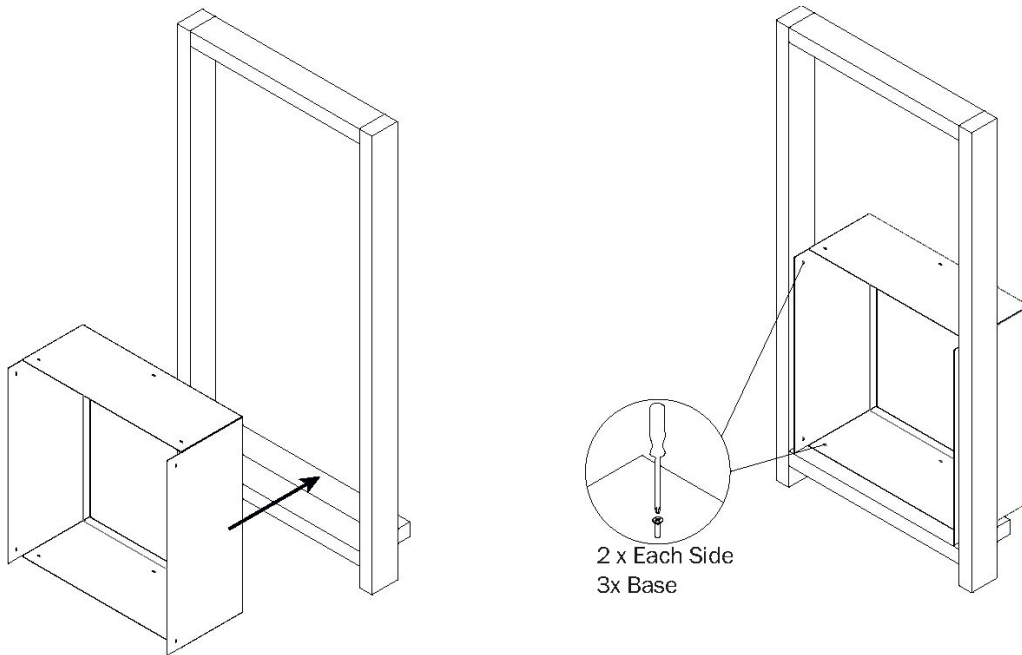
Assembly:

A) ROUGH IN STAGE (PRIOR TO PLASTER WORK):

2. Attach the bottom 'air filter frame' by utilising the pre drilled slotted holes on the base plate. (3 screws)

Notes:

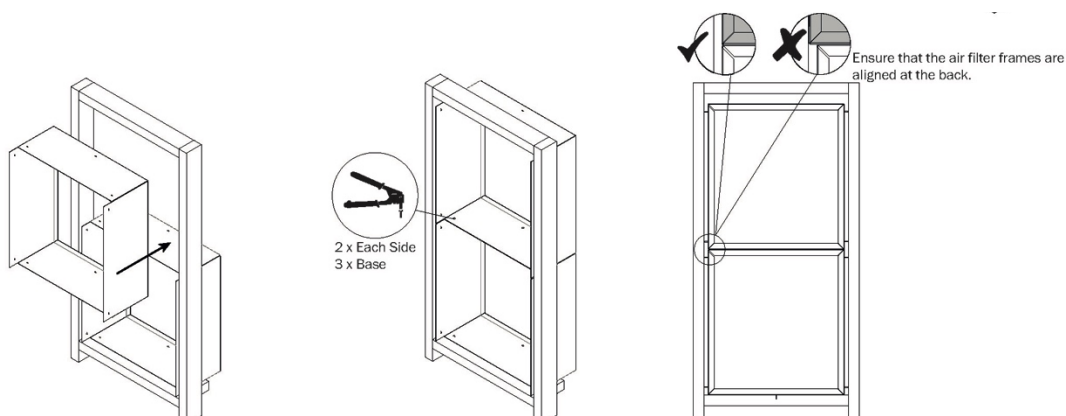
- Pre drilled slotted holes dimension: 3.3 x 10mm
- Utilise the holes on the side of the frame to fix to the studs.
-



3. Attach the top 'air filter frame' on top of the bottom 'air filter frame'. (3 x pop rivets used to fix frames together through pre-drilled slotted holes)

Notes:

- Pre drilled slotted holes dimension: 3.3 x 10mm (Recommended rivet size: 4-2)
- Utilise the holes on the side of the frame to fix to the studs.
- Packing between the stud and the frame may be necessary.
- Repeat if 3rd filter required for 1800 high return air.
- Push the frame hard against one side and then secure the screws.



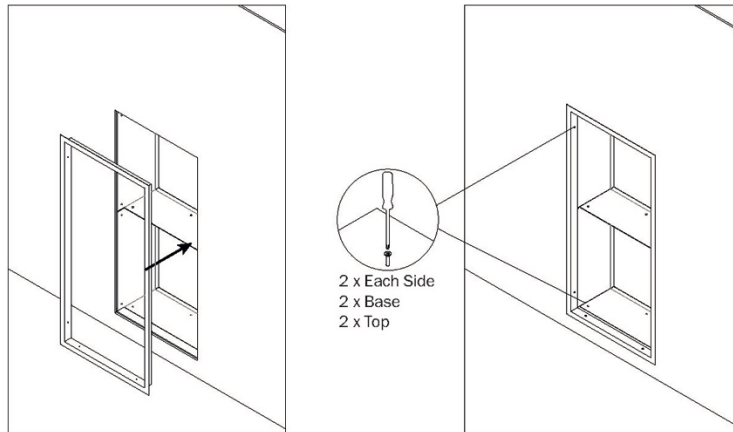
Assembly:

B) FINAL FITT-OFF STAGE (POST PLASTER):

4. Insert the 'grille frame' into the filter frame and screw fix it through the filter frame and into the timber studs.

Notes:

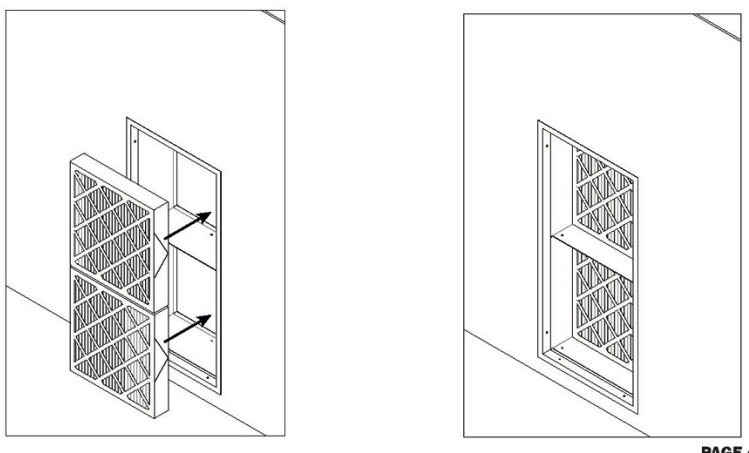
- The plaster work needs to be completed prior to this step.
- If return air is plastered over, cut out plaster to expose entire opening (i.e. sheet metal to sheet metal internal dimensions of the filter frame)
- The filter frames and grille frame have been made so the grille frame is able to slide neatly inside the filter frames.
- Care should be taken to ensure that the grille frame is firmly positioned up against the plaster wall.



5. Place 1x odour filter into each 'filter frame'.

Notes:

- Ensure that the direction of arrows are following the direction of air flow.



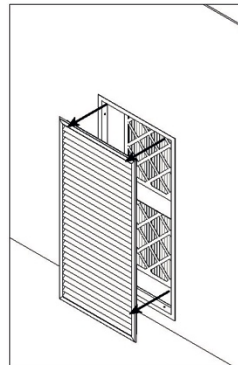
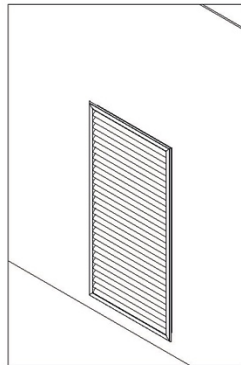
Assembly:

FILTER REPLACEMENT:

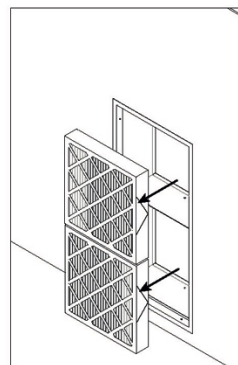
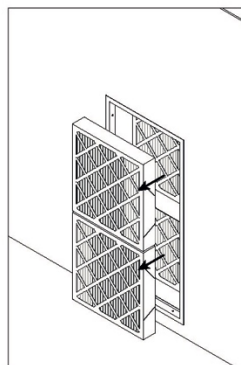
1. Remove the grille fascia.

Notes: a

- The grille removal requires some force and is easiest from The corners.



2. Remove all odour and particle filters and discard them.



Assembly:

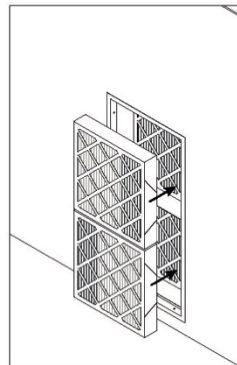
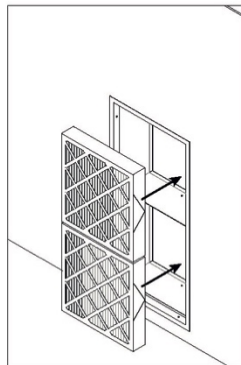
FILTER REPLACEMENT:

3. Remove the packaging and wrapping from the replacement filters and discard.

- Place 1x odour filter into each filter frames.
- Place 1x particle filter in front of each odour filter.

Notes:

- Ensure that the direction of arrows are following the direction of air flow.



4. Re install the grille fascia into position.

5. Notes:

6. Ensure that the direction of arrows are following the direction of air flow.
7. Ensure all the corners of the grille fascia are firmly positioned inside the frame

